



The new CineMonitorHD family sets a standard of excellence in the world of the high definition monitoring.

TRANSVIDEO's proprietary processor in conjunction with RealFrameRate RFR™ processing gives a crystal clear picture without aliasing or blur in motions. With a very friendly user-interface, the Operator's attention remains on the image framed rather than on the equipment.

The CineMonitorHD family is based on the same electronic design. Different size and models are available from 6" to 15", some of them include the SuperBright technology, allowing outstanding brightness and viewability in full sun.

Some specific features are available as option. The basic version includes all features needed by the majority of users.

Standard features

Accepts all SDI, analog HD & SD video signals
Luminance waveform monitor
Tally light
16:9 switchable 4:3 & anamorphic

Calibration

The white point of each monitor is calibrated to match D66 and D65 (Rec.709). A calibration option is available, it gives the possibility to remote a Minoita CA-210 color analyzer, the remote software and pattern generator are embedded in the monitor.

Optional features

Option	Description	Ordering code
HD Frameline	Generates 3 coloured frameline with or without center cross.	917TS0018
HD Virtual Horizon	Adds a colour coded electronic bubble with several representations. The sensor is embedded in the CineMonitorHD	917TS0019
Advanced Measurement Tools	Adds the RGB waveform with individual representation or parade mode, Vectorscope and Histogram.	917TS0023
3D View	Allows corelation of two synchronous HD camera (Only on the CineMonitorHD6)	917TS0028

Common Specifications

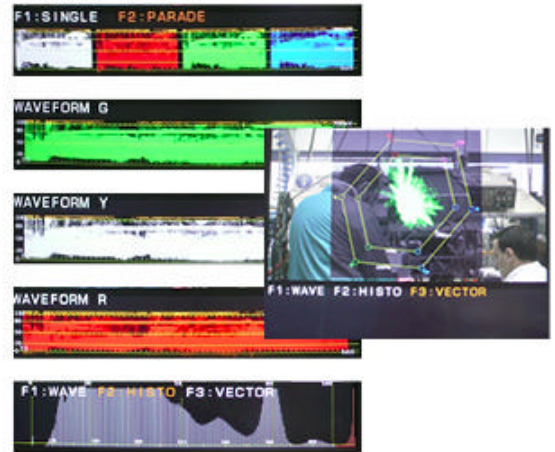
Standard	HD 720p, 1080p&i SD Pal Secam NTSC
Display Mode	Color, B&W, Green
Display	AMLCD RGB Stripe
Power	10 - 36 VDC with Galvanic Insulation
Video Connector	BNC
Power connector	XLR4 -1, +4
Operating Temp	-20°C +55°C
Storage Temp	-40°C +80°C

MAIN APPLICATIONS

- Digital Cinematography
- Hi-Speed Digital video
- STEADICAM®
- Helicopter (SB versions)
- Harsh environment

CineMonitorHD family

- 4:3
16:9
1:1.2.3.5
- RFR™
process
- TALLY
- Waveform
Vector
Histogram
- H&V FLIP
Auto
Reverse
- Latency
<1Frame
- ZOOM
- D66 - D65
Manual
color cal
- Safe area
markers
- Gamma
Adjustable



CineMonitorHD, Starlitecolor, StarliteDv, Rainbow, RainbowII, RainbowXtreme, CineMonitor, RainbowUHF, RainbowRF, hermes, pegasus, Titan, are trade marks of Transvideo